

Cub Scout Pack

1592

Family Information Guide

Last Updated: 12 August 2025



Table of Contents

New Cub Scout Quick Start Guide	1
Getting Started Checklist	
Online Resources	
Other Useful Websites	
Contact Information	
About Pack 1592	2
Activities and Outings	3
Den Meetings and Outings	
Pack Meetings	
Pack Events	
Camping	4
Twilight Camp	
Residence Camp	
Leadership and Volunteering	5
Pack 1592 Organization Chart	6
Volunteer Roles	7
Cost and Finances	8
Uniforms	9
Class A Uniform	
Class B Uniform	
Uniform Materials	10
Lion Scouts	
Tiger, Wolf, and Bear Scouts	
Webelo Scouts	
Arrow of Light Scouts	
Fundraising	14
Scout Account	
Resources	15
Scout Book	
Scout Shop	
Pack Code of Conduct	
Frequently Asked Questions (FAQ)	16
Does Pack 1592 allow girls to join?	
What level of parent involvement is expected	

New Cub Scout Quick Start Guide

Getting Started Checklist

A checklist to ensure you and your new Scout have a successful transition to Cub Scouts.

- ▶ Check out the website bookmarks below
- ▶ Visit Scout Shop to purchase Scout Uniform & Handbook (*See Uniforms page*)
- ▶ Request to join Pack 1592's private Facebook group (*see Web Presence*)
- ▶ Connect with your Scouts Den Leader to find out Den specific information
- ▶ Verify you can log into Scoutbook: (*see Web Presence*)



Online Resources

Pack 1592 has the following web presence:

- ▶ A public Facebook page that is used to promote the Pack.
<https://www.facebook.com/RosevillePack1592>
- ▶ A private Facebook group where Scout's Akela can see what is going on with the Pack and share the stories of their Scouts
<https://www.facebook.com/groups/pack1592/>
- ▶ A public website that shares information about the Pack.
<http://www.pack1592.com>
- ▶ Scoutbook – Where all Scout advancements are recorded
<https://scoutbook.scouting.org/>
- ▶ My Scouting – To access your Scouting America account for renewal
<https://my.scouting.org/>

Other Useful Websites

- ▶ The official Cub Scout information site:
<https://www.scouting.org/programs/cub-scouts/>
- ▶ Placer Scouting: <http://placerscouting.org/>
- ▶ Golden Empire Council's website: <https://gec-bsa.org/>

Contact Information

General Pack Contact: pack1592@gmail.com

Committee Chair: Greg Hill
Email: gjhill@mac.com
Cell: (916) 844-5134

Cubmaster: James Osle
Email: opie_msr@yahoo.com
Cell: (619) 518-7131

About Pack 1592

Pack 1592 is based in Roseville, CA. We primarily recruit new scouts from Diamond Creek Elementary, Blue Oaks Elementary, and Quail Glen Elementary, but we welcome new scouts from any school in Placer County.

Since 2010, Pack 1592 has been chartered by the Kiwanis Club of Roseville. Kiwanis is an excellent organization which has previously sponsored events for our boys, such as the 2009 Fall Fishing Derby! Michael Herbert is our Charter Organization Representative, father of one of our own Pack 1592 Cub Scouts, a member of our leadership committee and a Life Cub Scout himself. THANK YOU KIWANIS!

Pack 1592 has had a short but significant history that has impacted the community by:

- ▶ Collecting for the Salvation Army
- ▶ Collecting food for the Scouting for Food program
- ▶ Participating in the Toys for Troops toy drive
- ▶ Building a crossing guard shed for Blue Oaks Elementary School
- ▶ Christmas Caroling in Del Webb sun city
- ▶ Numerous color guard opportunities for other agencies
- ▶ And just being good scouts

We look forward to the years ahead as we continue to grow, to train up our boys to be leaders in the community.



Activities and Outings

Pack 1592 provides a variety of amazing Scouting activities throughout the year.

Den Meetings and Outings

Den meetings are organized by the Den Leader. Each Den will adhere to its own schedule depending on the availability of the Den Leader. Den meetings are held once a month. The schedule may vary depending on the needs of the Den and Den Leader and meetings typically start each year in September and conclude in April or May.

The Den meeting will occur at a location determined by the Den Leader. Den outings consist of activities such as hikes, visiting a police station, fire station, a hopping center, a nature center, etc. The specifics of the outing will depend on the requirements for the Den's rank.

Scout Tip: Arrow of Light Scouts (5th grade) complete their Cub Scout careers in February/March at a special Pack meeting called the "Crossover" ceremony.



Scout Tip: Newly formed Dens may start their first meetings later than September.

Pack Meetings

Pack meetings are planned and led by the Cubmaster and Assistant Cubmaster and occur once per month. The date and time will be listed on the Pack Website and Facebook as well as sent via email.

Pack meetings are a chance for the entire Pack to get together and celebrate each Scout's accomplishment.

Scouts receive awards and recognition from what they achieved during that month. Scouts also get to hear what other Den's have been up to and participate in songs, games, and/or skits.

Pack Events

Pack 1592 schedules many events for Scouts throughout the year.

These events generally include the annual Pinewood Derby, marching in parades, Pack hikes, Popcorn sales, the Annual Raingutter Regatta, etc.

Adult volunteers are critical in planning these activities, and we welcome new ideas for events and outings.

Camping

Our Pack provides multiple opportunities for camping throughout the year. Over the Summer there are several camp activities available to Scouts.

Twilight Camp

A 4-day long day-camp where Scouts enjoy a variety of activities including archery, games, arts & crafts, sports, etc. Twilight Camp is put on by the Golden Empire Council and is a chance to meet other Scouts in the area. It is usually held locally in the Roseville or Auburn area.



Residence Camp (Currently Closed)

Previously Scouts had the opportunity to camp at Camp Lassen. The Council is currently working to purchase a new camp property. The goal is for Scouts to learn and practice Scout and camping skills. As well as activities such as archery, BB guns, campfire skits, swimming, boating, nature hikes, and learn Scoutcraft skills such as knots, fire starting, whittling, and more!

We do not currently know when the Council will have a new camp ready. Pack 1592 tries to go on smaller weekend campouts to nearby public campsites in the fall and the spring.



Leadership and Volunteering

Volunteering is the foundation of every Cub Scout Pack. Without the passion and dedication from every-day people there would be no Scout program in the area. Every adult leader in Pack 1592 is a parent and volunteer.

Each family is expected to volunteer and provide assistance to the Pack in some capacity each year. This can be achieved through a formal Pack leadership role, or through help at the committee or activity level. Each year we need volunteers to organize and run our annual Pinewood Derby, but we also rely on parents to help coordinate and organize hikes and campouts.



Volunteering is a great way for a caring adult to model the values of Scouting for their Scouts. It can be a lot of work to be a volunteer, but it is also a lot of fun and a great way to meet and work along with other people in the community. The strength and quality of the Scout program ebbs and flows depending on the dedication of the families.

At the core of the Pack is the Pack Committee. This consists of volunteers that discuss and decide on how the Pack operates and what its priorities are. Pack committee meetings occur once per month and are open to all Pack 1592 members.

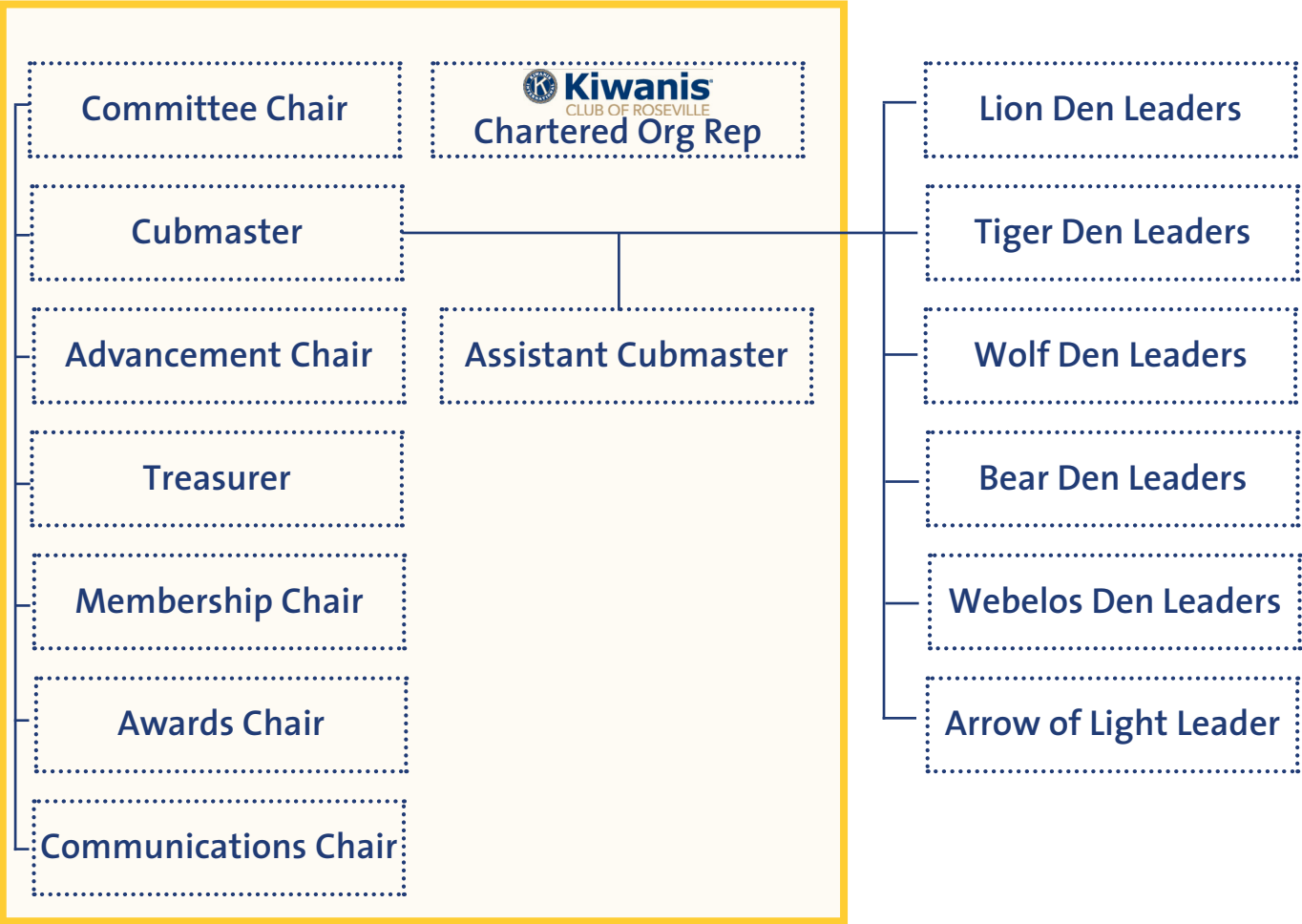
If there is a concern about the time commitment, there are opportunities to volunteer for the duration of specific activities such as planning and coordinating a Pack event, outing or fundraising activity.

There are a lot of volunteering opportunities, and the Pack depends on those roles being filled.

Pack 1592 Organization Chart

Pack 1592 uses the same organizational structure as most other Cub Scout Packs. Cub Scout Packs are required to be sponsored by a Chartering Organization, who assign a representative to work with the Pack to ensure the program is well run.

Pack Committee



Volunteer Roles

Committee Chair

- » Schedule and conduct pack leader meetings.
- » Conduct annual pack planning conference
- » Assign projects to committee members and guide their efforts
- » Provide support and encouragement to Pack leaders.

Cubmaster

- » Conduct Pack Meetings
- » Obtain adult help and resources as needed through the Pack Committee
- » Coordinates meetings with Den Leaders

Assistant Cubmaster

- » Assists the Cubmaster in all of his/her duties

Den Leader / Assistant Den Leaders

- » Coordinate and run individual den activities
- » Be the primary volunteer that interfaces with the cub scouts and families
- » Work with the Cubmaster and Committee to deliver the Cub Scout Program

Awards/Advancement Chair

- » Enter advancement reports to Scoutbook, local council, and obtain awards
- » Coordinates with Cubmaster to plan Pack Meetings, Arrow of Light and Webelos graduation ceremonies

Treasurer

- » Help the Pack plan, budget and account for Pack funds
- » Help coordinate fundraising activities
- » Assist the Friends of Scouting campaign

Membership Chair

- » Performs recruitment for new scouts
- » Welcomes new families to the Pack
- » Assists with the annual recharter

Secretary

- » Keep minutes for committee meetings
- » Keep track of committee assignments
- » Assist in maintaining membership records

Communications Chair

- » Send communications to the pack by email about upcoming events and activities
- » Update the pack website and social media with information about upcoming events

Other Volunteer Roles and Event Coordinators

- ▶ Fundraising/Popcorn Kernel
- ▶ Sunshine Chair
- ▶ Camp Card Chair
- ▶ Fall Hike Coordinator
- ▶ Meals on Wheels
- ▶ Spring Hike
- ▶ Kings Game Outing
- ▶ Pinewood Derby
- ▶ Twilight Camp
- ▶ Fishing Outing
- ▶ Fourth of July Parade (District Led)
- ▶ Residence Camp
- ▶ River Cats Scout Night
- ▶ Raingutter Regatta

Parent Tip: Single Event Coordinators are a great way to volunteer without a large time commitment!

Cost and Finances

For new parents considering having their child join Scouting see the following pages for information on costs.

Scouts will be enrolled for one year from when they join. After a full year, they must renew with Scouting America.

Note: These costs may vary from year to year, and scouts can offset these fees by participating in fundraising activities like selling popcorn. See the Fundraising page for details.

Annual Dues for Cub Scouts

\$85
per year

NATIONAL SCOUTING AMERICA DUES

The first \$85 in fees go to the National Scouting America organization to help cover the administrative costs of running the program. This includes insurance for our activities.

\$40
per year

PACK FEES

The Pack fees go toward renting space for our monthly pack meetings, Pinewood Derby, Blue and Gold Dinner, and other events. Pack fees also cover the cost of advancement awards (pins/belt loops) and registration fees for all adult leaders.

\$80
per year

COUNCIL DUES

The next \$80 in fees goes to our local Golden Empire Council and help maintain our local camps and properties. This also goes towards local program opportunities and administrative costs.

\$205
per year

TOTAL REGISTRATION

Compared to other youth organizations, our Cub Scout program packs a lot of value for a relatively low cost. Many of our events also provide opportunities for the whole family to participate and have fun.

Uniforms

In Cub Scouts each Scout will have two uniforms, the traditional formal uniform, and an activity t-shirt. For shorthand the formal uniform is referred to as “Class A” Uniform and the activity t-shirt is referred to as the “Class B” uniform. They are both considered official Scouting uniforms.

Scout Tip: When honoring the American flag Scouts and Scout Leaders should salute when wearing either a Class A or a Class B uniform. When not in uniform Scouts and Scout Leaders place their right hand over their heart.

Class A Uniform

The formal uniform for Pack 1592 consists of the uniform shirt, belt, shorts or pants, and the neckerchief with slide. Hats and socks are optional.

For Lion Scouts, the Lion T-Shirt is worn and considered the Class A uniform.

For Webelos the Scout can continue to wear the navy-blue uniform or can switch to the tan uniform.

For Arrow of Light the tan uniform is worn.

When buying the Class A uniform from the Scout Shop it will include the Golden Empire Council patch and Scout World Crest emblem patch. If you purchase a uniform elsewhere you will need to ensure these patches get added.

Scout Tip: The Arrow of Light tan uniform is the same as the Scouts BSA uniform and can be used when your scout bridges.



Scout Tip: If you are unsure which uniform to wear to a particular event, please don't hesitate to reach out to the event leader or coordinator.

Class B Uniform

The pack T-Shirt, also known as the Class B uniform, is available for purchase from the Pack for \$15.

Typically the Class B uniform is worn when doing a physically active outing such as hiking, fishing, camping, etc...

Uniforms

Our pack is working to decrease the cost of scouting however possible. For each rank the scouts are encouraged to wear the correct uniform that includes the blue shirt, neckerchief, and a neckerchief slide.

As the neckerchief slides are costly and easily lost, we encourage scouts to find other creative neckerchief slide ideas online. Rank-specific neckerchiefs can be handed down to younger scouts, siblings, or can be kept as a keepsake.

The rank-specific handbook is less important in the digital age. All advancements are recorded digitally on Scoutbook, the handbook pages can frequently be printed by den leaders on an activity by activity basis. You may purchase a physical handbook if you desire.

Additionally, a used uniform closet for both uniform shirts and accessories is being maintained by pack volunteers.

Belt loops, pins and other awards are covered by the Pack.



Lion Scouts

Youth that join Cub Scouts as a kindergartener will join a Lion Den.



Class A Lion Uniform

\$15

Tiger, Wolf, and Bear Scouts

Costs associated with a new Tiger, Wolf or Bear. (Grades 1-3)



Class A Uniform Shirt

\$34

River City Scout Shop will sew on appropriate patches for a nominal fee



Uniform Belt

\$15



Rank Neckerchief

\$13



Rank Neckslide

\$8

Budget Saving Tip: Uniforms and accessories are being collected in a “closet” for those than are looking for ways to save, and those who have some to donate.

While we cannot gurantee it, when Pack Funds available allow it, efforts are made to provide the next rank neckerchief so you don’t need to purchase it.

Uniforms CONT.

Webelo Scouts

Costs associated with a new Webelo. (Grades 4)



Class A Uniform Shirt *

\$34

River City Scout Shop will sew on appropriate patches for a nominal fee



Uniform Belt

\$15

* Because scouts will switch to the Tan Uniform in 5th grade, it's fine if you want to skip the blue uniform for 4th graders and just go straight to Tan. Especially if your 4th grader has either outgrown an older blue uniform or is a brand new scout.



Webelo Colors

\$8



Webelo Neckerchief

\$13



Webelo Neckslide

\$8

Arrow of Light Scouts

Costs associated with a new Arrow of Light. (Grades 5)

This uniform shirt will be used in Scouts BSA Troops after the scout graduates from Cub Scouts and “crosses over” half way through 5th Grade.



Class A Uniform Shirt

\$40

River City Scout Shop will sew on appropriate patches for a nominal fee



Green Uniform Belt

\$20



Webelo Colors

\$8



Scouts BSA Neckerchief

\$13



Scouts BSA Neckslice

\$8

Fundraising



Fundraising is a critical component of the Scouting program; without it the Pack would not be able to operate. Scouts that participate in fundraising activities also benefit through a percentage of funds raised are given to the Scout via their Scout Account.

Typical fundraising events the Pack puts on include popcorn sales, camp card sales and our annual fundraising dinner, raffle, and bingo night.

Scout Account

Each Scout has an account balance they can earn money into from participation in fundraising activities. The Scout Account balance can be used to pay for many things such as Twilight Camp registration fees, Residence Camp fees, and other activities that have a registration cost. Scout Account funds can also be applied to the annual renewal fee.



Resources

Scout Book

Scoutbook is Scouting America's official web application for managing all aspects of a Scouts involvement. It can be accessed from <https://scoutbook.scouting.org/>. Scoutbook is the official record of scouting advancement for cub scouts, but it also can manage calendar events, send reminder emails, etc.

Scout Shop

The local Council Scout Shop is the River City Scout Shop located at 3851 N Freeway Blvd suite 100, Sacramento, CA 95834.

The Scout Shop is where to purchase uniforms, handbooks, and other official Scouting items. Uniforms and additional scouting goods can also be purchased online at <https://www.scoutshop.org>

Pack Code of Conduct

All leaders are committed to protecting our youth and are required to comply with Scouting America and California requirements for volunteering with children. Scouting America requires that all leaders complete a Scouting America Adult Application and background check, as well as taking the Scouting America Safeguarding Youth Training every 2 years. Additionally the State of California requires that volunteers in youth organizations complete a LiveScan background check and additional state-specific youth protection training.

Parents also play an essential role in safeguarding our youth, and parents that attend campouts and scout events are also required to take the Scouting America Safeguarding Youth Training. "2-deep leadership" will always be followed, with a minimum of 2 adults present while working with youth.

The primary focus of our volunteer Scout leaders is to deliver the Cub Scout program. It is not the responsibility of the Scout leader to discipline a scout who is disruptive or exhibiting poor behavior. It is expected that the Scout's caring adults observe their behavior and take action before any unruly or dangerous situation arises.

If a Scout has special needs, physical, behavioral, or otherwise, it is expected that the Scout's trusted adult will inform the leaders working with the Scout. With proper support and communication all Scouts should be successful in reaching their Scouting goals.

Frequently Asked Questions (FAQ)

Does Pack 1592 allow girls to join?

Absolutely! Pack 1592 welcomes both boys and girls to the Cub Scout program. While each Den is gender specific, many boy and girl Dens conduct combined events and all Pack activities include all Dens. Cub Scouts is also rolling out “Family Dens” which allow girls and boys to participate in the same Den. Decisions about how to organize these will be made depending on population of the pack, dens, and the wishes of Pack 1592 families and leaders.

What level of parent involvement is expected

Lions and Tigers (Kindergarten and 1st grade, respectively) are required to have an adult/akela/partner present at all meetings and activities. Parents of Wolves (2nd grade) and above have the option to leave their Scout at a meeting with proper communication with the Den or activity leader, and as long as 2 deep leadership is always maintained. Most of the Scouts’ requirements for advancement will take place during organized outings, Pack meetings, and Den meetings. Sometimes at home activities will be assigned at Den meetings depending on how the Den leader designed the curriculum.

As an all volunteer based organization it is critical to have parent’s volunteer to help keep the Pack functioning. It is expected that all parents help volunteer in some capacity. See the volunteer roles section for more information.